

THE SUMMIT

THE SUMMIT

THE SUMMIT

THE SUMMIT

THE SUMMIT

THE SUMMIT

ITE Mountain District
Quarterly Magazine



SUMMER 2021
ISSUE 03

THE SUMMIT

THE SUMMIT

THE SUMMIT

LEADERSHIPITE

A FIRSTHAND ACCOUNT

DISTRICT BOARD ELECTIONS

HEAR FROM YOUR CANDIDATES

MEMBER SPOTLIGHT

MEET VICTORIA EDINGTON

FEATURED SPONSORS

LEE ENGINEERING
SANDERSON STEWART

Featured Sponsor

TRAFFIC...

it's what we do.



Traffic Engineering Studies



Transportation Planning



Traffic Engineering Design



Traffic Operations



Intelligent Transportation Systems



Special Services

Over 30 years of providing exceptional Traffic Engineering and Transportation Planning services throughout the Southwest.

Founding Sponsor for the MountainITE District



ENGINEERING

CONTENTS

NEWS

- 18 Committee Updates
- 23 Around the Profession
- 25 Section/Chapter Updates

COLUMNS

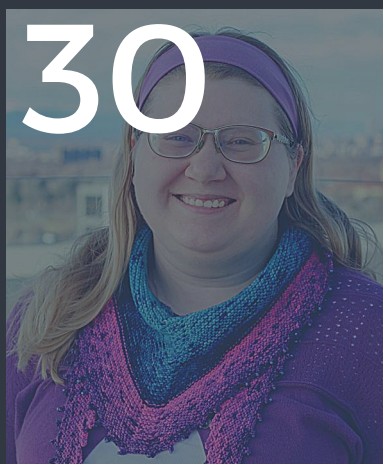
- 03 Letter from the President
- 17 Spotted!
- 29 New Member Welcome
- 37 District Contacts

SPONSORS

- 01 Featured Sponsor - Lee Engineering
- 04 Featured Sponsor - Sanderson Stewart
- 33 District Sponsors

ON THE COVER

Nine logo options for your magazine! Go to the [survey](#) to vote for your favorite before August 31st!



FEATURES

Award Winners

Help us congratulate the 2021 District award winners and members recognized by ITE International!

LeadershipITE: My Experience

Hear from Lisa Miller, LeadershipITE Graduate.

Your Mountain District Candidates

Read more about the candidates running for District office ahead of the 2021 elections!

Member Highlight

Meet Victoria Edington



Benjamin T. Waldman
Mountain District
President
ben.waldman@apexdesignnpc.com

Hello Mountain District ITE Members.

The 2021 Joint International, Mountain and Western Districts (Virtual) is now less than a month away. We are super excited to have U.S. Secretary of Transportation Pete Buttigieg as our keynote speaker! The theme of the meeting is ***Navigating a New Future*** which is timely with our current transition out the past year and into a new normal. The technical program on July 20th to July 29th features 40 technical sessions, more than 85 poster presentation and 6 workshops focusing with an opportunity to earn 60+ PDH credits. The meeting will be held virtually which makes the meeting more accessible for many of you and allows for access to the meeting from the comfort of your home or office.

Students are welcome and there will be technical sessions and activities tailored for them in addition to opportunities to hear about the latest in our profession. In addition, Council and Committee meetings will be held during the week of August 3rd and all meeting attendees are welcome to join these meetings to listen in and/or provide input.

The Mountain District has two events during the meeting that we encourage district members to attend. Our Annual Business meeting will be on Tuesday July 20th, 12:30 to 1:30 Mountain Time and we will review and approve the 2022 budget and announce our District Award winners. We will also have a social Trivia event on Thursday, July 22nd where you can socialize with other District members, show off your knowledge and have an opportunity to win some prizes. Keep an eye on your inbox as invites to these events will be coming soon. The links to access these events will also be in the ITE Annual Meeting program.

Registration is open now for all and there is a reduced registration cost for students.

<https://www.ite.org/events-meetings/ite2021-registration-page/>

Don't miss your chance to join more than 1,600 transportation professionals and learn the latest about the transportation planning and engineering profession. We also will have our Annual ITE Mountain District Board Meeting coming up on July 8 and all are welcome to attend. Hear about the activities within the District, updates from Committees, opportunities to get involved, and upcoming events to look forward to.

Sincerely,
Ben Waldman, PE, PTOE

SANDERSON STEWART



Featured Sponsor



We Design Better, Together.

Sanderson Stewart is a full service community design firm. Our multidisciplinary *Complete Design* approach results in more holistic and creative solutions. Our Design Studios recently collaborated on this design concept to win the Honorable Mention Award for the 2020 ITE Micromobility Sandbox Design Competition.



Traffic Engineering ■ Community & Multimodal Planning ■ Infrastructure Engineering
Landscape Architecture ■ Placemaking ■ Surveying & Mapping ■ Branding & Visualization

"Seen" Around The District



↑ Arizona ITE at Feed My Starving Children, 6/23/2021

↓ Student of the Year Award, CO/WY Section, 2021



Register Now!

In conjunction with the ITE International Meeting, the Mountain District invites you to a (virtual) social where trivia is king! Join us for a virtual trivia night on **July 22nd at 3:30pm MST** for five rounds of esoteric knowledge goodness (and a lot of fun, too). Bring a friend, or just yourself, and see which team has what it takes to be crowned "Mountain District Trivia Champion"! To sign up, please contact **Joshua Saak** at Joshua.saak@burgessniple.com or register [here](#). There is no cost associated with this event, and the comradery is priceless. Don't delay, sign up today!

The Mountain District Annual Business Meeting will be held **July 20, 2021 at 12:30 PM Mountain Time**, and everyone is invited. Register [here](#)!

2021 Award Winners

The 2021 Mountain District Award Winners are listed below, along with District members who have been recognized by ITE International. Congratulations to all!

Outstanding Section/Chapter Award

Colorado-Wyoming Section

Mountain District Rising Star

Victoria Edington - Stantec

Transportation Achievement Awards - TMSO

City of Greeley, CO - Traffic Signal Infrastructure Upgrades

Student Chapter Award

Brigham Young University

Student Chapter Momentum Award

University of Nevada, Las Vegas

Student Paper Award

Yirong Zhou, University of Utah

Outstanding Undergraduate Student

Bryce Game, Montana State University

Outstanding Graduate Student

Emmanuel James, Northern Arizona University

Outstanding Educator Award

Nick Ferenchak, University of New Mexico

Traffic Bowl

Brigham Young University



Bryce Game, MSU



Emmanuel James, NAU

LeadershipITE Graduate

Ethan Coxsey

ITE Young Leaders to Follow (Inaugural Class)

Victoria Edington - Stantec

ITE Young Leaders to Follow (Inaugural Class)- Young Member of the Year

Yung Koprowski - Y2K Engineering

Read more about LeadershipITE here:

<https://www.ite.org/professional-and-career-development/leadershipite/>

Read more about the ITE Young Leaders to Follow:

<https://www.ite.org/professional-and-career-development/young-leaders-to-follow/young-leaders-to-follow-for-2021/>

Help Brand Your Magazine!

After the District membership voted to name our new quarterly magazine The Summit, a call for logos was announced. The nine entries are shown on the cover of this issue. Please go to the [survey](#) to vote for your favorite before August 31st!

Call for Articles

If you would like to submit an article for potential publication in a future issue of The Summit, please submit the information to communications@mountainite.org. In addition to the article itself, please include photos/images related to the article as well as an author photo and brief bio.

Call for Photos

We are always looking for photos! Send your potential cover photos (along with location within the Mountain District) to darlene.yellowhair@psomas.com or your event or ITE Mountain District swag photos (taken anywhere around the world) to communications@mountainite.org. Photos can be submitted anytime.

FOLLOW US ON SOCIAL MEDIA



@ITEMountainDistrict



ITE Mountain District

Have a picture or update for us to post? Please send it to communications@mountainite.org

Enabling Your Smart City

Simrex Corporation has had a proven track record for over 30 years, producing high reliability wireless communication products that have been a critical part of vital communication systems worldwide.



Products:

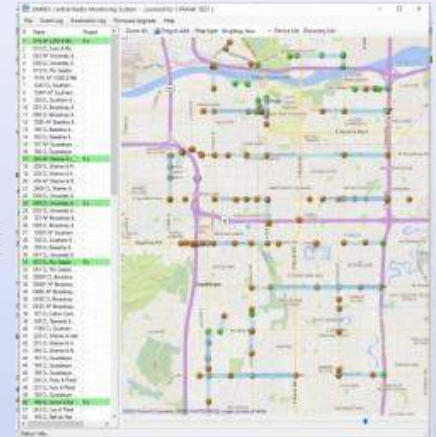
- Managed Switches
- IP and Serial Radios
- Microwave Radios
- Contact Closure Radios
- GPS Timing
- Sensors

Solutions:

- Controller Interconnect
- Fiber Bridging
- Coordination
- Data Backhaul
- Solar Powered Systems
- Preemption

Included Perks:

- Stellar Support
- Intuitive Management Software
- Preprogrammed Deployment
- Profile Based Management
- GUI and Cloud Based Monitoring
- Advanced Diagnostics
- Network Design



Connectivity



Sustainability

All solutions can be provided in enclosures with Solar power systems sized for your location.



Integration

Our Applications Engineering Team provides presales support, field surveys, path analysis, network design, solar designs and can provide complete client support through implementation, acceptance test and training. For most wireless links, path viability can be fully qualified during the initial inquiry by telephone discussion or screen share.

LEADERSHIP ITE: MY EXPERIENCE

BY LISA MILLER, UDOT

The Institute of Transportation Engineers (ITE) is a worldwide organization with over 15,000 members. The ITE leadership program brings together transportation professionals to network, learn and grow. I was accepted into the 2020 Leadership ITE program and found it to be an incredibly rewarding experience.



The program consisted of several in-person workshops. Due to Covid, a majority of those workshops were transitioned to virtual learning. The first session in January 2020 was in-person in Washington DC, to coincide with the Transportation Research Board (TRB) annual meeting. TRB draws tens of thousands of transportation professionals from all over the world. TRB blends research and academia with real world transportation focused case studies and allows transportation professionals to learn about best practices in the field. Kicking off the leadership it program in conjunction with TRB is natural fit.

Applying to the Leadership ITE program consists of several steps. There are letters of recommendation, essays and other application components required for this competitive program. The Leadership ITE program began in 2014 and has program goals specifically ensuring that participants will take away skills to allow them to be a high functioning communicator, be self-aware and confident in leadership roles, and become an effective advocate for the transportation industry. To be eligible to participate in Leadership ITE, applicants must be an active student member or fellow in good standing, be able to demonstrate contributions to it through volunteer activities, and be willing to work with their employer to receive financial support to cover the \$3000 registration fee.

I was immensely fortunate to attend the 2020 Leadership ITE session with 25 transportation professionals from all over the United States and Canada. The disciplines ranged from public and private sector individuals and academia. Some participants were newer in their careers while some had 15 years of experience. There was involvement from ITE leadership, with Jeff Paniati presenting and sharing his ideas for the future of our industry.



LITE Class of 2020

Shelley Row, a professional engineer and former USDOT executive, lead the program and developed it from the ground up to give transportation leaders the tools and leadership knowledge we need to be successful.

Following the initial sessions, participants are broken into small project working groups. Each working group was responsible for project ideas that solved problems or streamlined processes throughout the ITE organization. Our group sought to streamline student chapter involvement in order to maximize resources and encourage student members to continue participating in it once they graduate.

The Leadership ITE curriculum was unique in its content. Rather than focusing solely on the skills of effective leaders, Shelley discussed the DNA behind how human brains work. Knowing your brain and your values, work style and communication style is very important in a professional setting. In order to best coordinate in a team it's important to know whether someone is information oriented, goal setting oriented and if they prefer to make fast paced or more carefully constructed decisions. Through the assessment that Shelley led, I was able to determine that my values are logical, decisive, intuitive, direct, and efficient. My communication style preferences are direct with forward momentum. While that may suit my professional needs, it can be in direct conflict with other preferences on my working team. Shelley shared with us that sometimes what we consider our greatest strength can also be considered by someone else to be a weakness.



Work Styles Chart

Another significant component of the training was an opportunity to network with the ITE International Board of Directors. This is a once in a career opportunity to have high level leadership all in one place, focused on interacting with the Leadership ITE participants with the sole focus of giving them feedback on how to become better professionals.

Prior to this networking opportunity Shelley encouraged us to create a networking plan to most effectively utilized our time with the Board of Directors. Questions like who will you connect with? What questions will you ask each person? How will you follow up and when? I was able to network with several Board of Directors members and discussed how I could further the mission and the goals of ITE when I returned to Utah.

During the international board of directors networking event, our groups participated in a "Shark Tank" style process where we were able to discuss our group projects and get feedback. The group projects focused on emerging topics within the transportation industry and were all very diverse in nature.

Each year, the groups are assigned project mentors from both Leadership ITE alumni support network and the current International Board of Directors. These mentors are asked to support the teams and provide insight to enhance the project development process. During the Shark Tank presentations, each team had four minutes to pitch their project ideas to the room full of “sharks”. At the end of each pitch the “sharks” will be given 3 minutes to comment publicly on the project ideas. Following the event, the “sharks” are encouraged to informally discuss project ideas with Leadership ITE participants and to seek out groups that they may be interested in mentoring. While this process was somewhat stressful, the feedback that our group received was insightful and very helpful when it came to developing our project.

Engaging in leadership opportunities is an excellent way to stay abreast of current trends, topics and emerging ideas in any profession. There are different leadership classes and engagement opportunities at all different levels of a professional career. Some leadership opportunities are very labor intensive and require a substantial time commitment, while other opportunities are available on a case-by-case basis as time permits. Mentorship is an excellent way to contribute to your profession and is very flexible in the time commitment. Many professionals mention that when they were starting out in their careers, they wish they would have had a mentor that could have given them guidance for what to expect as well as recommendations on how to grow their career.

The Utah Engineers Council has a robust scholarship program funded from donations of individuals and businesses seeking to move forward initiatives in science technology engineering and math (STEM).



Lisa Miller, UDOT

There are always ways to engage and network within your profession. I would encourage all transportation professionals, not only engineers, to consider the Leadership ITE program. The networking opportunities that were provided to me through this program will be connections that I will utilize for the rest of my career. Participating in leadership programs can provide a wealth of knowledge as well as a better understanding of the nuances of any profession. The outcome I received from participating in the Leadership ITE program was well worth the time and effort invested. To learn more about the Leadership ITE program visit www.ite.org and search for Leadership ITE under the professional development section of the website. To learn more about Blue Fjord Leaders and Shelley Row, visit <https://www.bluefjordleaders.com/>.

Lisa Miller is the Outreach and Growth Manager at the Utah Department of Transportation. Lisa acts as a Public Information Officer for UDOT and interacts with local media during large scale special events and severe weather. Lisa is also responsible for outreach for the UDOT Transportation Technology Group, focusing on media involvement, program management, strategic communications and outreach. Prior to her current position, Lisa was an on-site consultant program manager, where her duties involved communications, traveler information, grant writing, Traffic Management Center operations, and media relations. Lisa is a past president of ITS Wisconsin and the current secretary for the Utah Section ITE. Ms. Miller holds a Bachelor of Arts in Communications from the University of Wisconsin – Milwaukee and a Master’s Degree in Journalism and Mass Communication from South Dakota State University, graduating with a 4.0 GPA.



Summit Traffic Solutions provides the best intelligent transportation and intersection management systems to the four-corners states territory. Summit Traffic has a 12-year proven track record providing the best customer service to the agencies we support.

Your success is our priority.

summit-traffic.com



MOUNTAIN DISTRICT ELECTIONS COMING IN JULY-AUGUST

The Mountain District will be presenting an exceptional ballot of candidates for the 2021 Executive Committee. Online voting will begin in late July. More information on the mechanics of voting will follow, but for now we are excited to announce our candidates.

2021 ITE Mountain District President Candidate - Devin Moore

Who's ready to meet together again?! We look forward to being with you in person in Boise next year to truly kickoff our return to normal and ring in the Mountain District! It has been an honor to be included in the Executive Committee and to serve the District as Vice President this past year.

I have valued the technical skills, relationships, and professional opportunities I have gained through ITE and I'm excited to continue to serve our District as the President by focusing on three key areas:



Students: I will continue the progress we've made as a District to involve, encourage, reward, and empower students.

Networking: Particularly after this past year apart, we need to focus on relationship-building within the District, I want to help sections and chapters hold more social events and encourage networking at technical events. As we serve, play, and work together, our relationships will strengthen and our network will bolster us all.

Giving back to our Communities: To encourage this community-centered mindset in our districts, sections, and chapters, I want to re-enthroned service as a staple of ITE. In addition to giving back to our local communities, this will positively reinforce our brand and increase public opinion of transportation professionals.

Thank you for considering me for your next Mountain District President.

2021 ITE Mountain District Vice President Candidate - Danielle Scharf



It is an honor to be a candidate for Vice-president of the ITE Mountain District. ITE is my professional organization of choice and I feel passionately about giving back to an organization that has been such a big part of my life for 20 years. I am especially excited about the opportunity to help grow the newly formed Mountain District into the best district in ITE. I was honored to be a member of the OneITE Mountain District Sub Task Force, which was an amazing group of individuals that helped to establish the foundation for the Mountain District. I look forward to joining the other Board members to continue the important work of establishing new traditions and exceeding our members expectations for the new district.

Through my role as the Student Initiatives Committee Chair for the Western District, I have attended nearly all of the Western District's mid-year and annual board meetings for the past 10 years. This has given me relevant experience and insights into the operation of an ITE district board. It also gave me the opportunity to grow and shape the student programs for the Western District, which has been held up as the model for ITE. I have worked hard to ensure that the next generation of ITE leaders are offered the same opportunities that I was given as a student member of ITE, the opportunities that have shaped both my career path and leadership path in ITE.

I am a Principal and Region Manager for Sanderson Stewart in Bozeman, Montana. I have worked for Sanderson Stewart for nearly 19 years and have received nothing but enthusiastic support and encouragement for my involvement in ITE.

I'm excited for this next chapter of serving as Vice-president of the Mountain District and I would sincerely appreciate your support.

2021 ITE Mountain District Secretary-Treasurer Candidate – David Lucas

It is a distinct honor to be nominated as a candidate for Secretary-Treasurer of the ITE Mountain District. My introduction to ITE and the Arizona Section began with serving on the Conference Program Committee. As a result of the passion, energy and ideas I brought to the table, as well as my desire for an expanded role, I was soon nominated and elected to the Section Board as Treasurer. Later, while serving a second term as Section President, I was appointed to the OneITE Mountain District Subtask Force, which was tasked with the responsibility of standing up a new District.



There was a remarkable energy among this group, as I and the other members recognized the unique opportunity available to us, the chance to start fresh and build something special for the members of this new District. With the help of all those involved, we have made excellent progress as a new District and have already achieved many goals but recognize that much work remains to be done; I would be honored to be elected Secretary-Treasurer to continue this work.

After serving as an officer on the Arizona Section board, I have continued to serve on both the Arizona Section and Mountain District boards for the past two years as Section Representative. It has been a great opportunity to implement many of the ideas proposed by the new District while building closer ties with the Section. In addition, as the Mountain District Advertising Committee Chair, I have led the development of our initial and ongoing sponsorship and fundraising opportunities, with outstanding results, providing much-needed startup funds for our District initiatives.

In addition to my leadership roles with ITE, I have served on the board of the Intelligent Transportation Society of Arizona in various roles for over a decade and have also chaired various regional committees within the Phoenix metro area. I feel service is a responsibility we all share as professionals and one which provides huge benefits for all involved. This also carries over into my role as a public agency employee. As an ITS Network Engineer for the City of Tempe, I manage the City's Intelligent Transportation Systems infrastructure and do my part to ensure a great quality of life for our residents. I look forward to continuing to serve my City and the Mountain District membership and ask for your vote as the next ITE Mountain District Secretary-Treasurer.

2021 ITE Mountain District Secretary-Treasurer Candidate – Kordel Braley



I'm honored to be a candidate for Secretary-Treasurer of the ITE Mountain District. I've been actively involved in ITE since attending my first ITE social at BYU as a freshman. I was able to serve as an officer in the ITE Student Chapter at BYU as well as for the Utah Chapter. Since completing my four-year term as a Utah officer, I've stayed involved serving on both the Awards Committee and the Student Outreach Committee with the Utah Chapter (now Utah Section).

I feel my participation in ITE has been very beneficial to me, so I've continued looking for opportunities to give back. I'd be honored to have that opportunity again with the Mountain District.

I've learned two lessons from this past year that I'd like to apply to my ITE service, should I be elected:

1. Much like an effective transportation system benefits from a variety of choices (modes), our District should provide a variety of choices for networking and learning. One outcome of the pandemic has been a realization that there is flexibility in how we can operate as a district in terms of overall participation. Some will prefer and benefit more from in-person opportunities, while some will prefer to participate remotely. As a board member, I will promote flexibility and a variety of options for our events.

2. While many of us are enjoying newfound flexibility of working from home, our profession has a growing number of new engineers and planners that don't have the relationships and camaraderie we already enjoy with each other. I think many of us view our membership in ITE as something transactional. "What do I get for the money me or my employer spends on membership?" I'd love to promote more of a service-minded attitude of, "How can I give back to my profession and help mentor the next group of transportation professionals?" As a board member, I will be looking for opportunities to foster service, mentorship, and an exchange of ideas and experiences.

I have 15 years of experience in the transportation profession and am currently a senior traffic engineer for AECOM. I have supported many projects throughout the Mountain District area and I have AECOM's full support to serve in this position. I would be honored to have your support.

Spotted!

Send your photos with your Mountain District swag to communications@mountainite.org

Office View
Las Vegas, NV
Devin Moore
Nevada Section



Mt. Princeton, CO
Jenny Grote
Arizona Section



Pre-Pandemic (2019)
Mountain District
Leadership



Mountain District Committee Updates

Advertising Committee

Chair: David Lucas
(David_Lucas@tempe.gov)

The Advertising Committee continues to meet bi-monthly to share information about sponsorships and advertising opportunities throughout the District. We are looking for a Vice-Chair, so if you have been on the sidelines, waiting for a chance to get involved and help raise money to support your District, this leadership position could be for you!

Please take this opportunity to review the ads of our excellent sponsors within this edition of The Summit and on the Mountain District website to learn more about their exceptional products and services. We are honored to have six Founding Sponsors and ten District Sponsors and would like to thank them all for their continued support! Note that Founding Sponsorships are still available, but only until the end of 2021, so there is still time to upgrade your sponsorship level and receive additional recognition.

Job Postings are becoming more popular and are a very effective way to reach over 1600+ professionals across the eight states of the Mountain District for only \$250 for a 45-day posting. Founding and District Sponsors each receive two free job postings as part of their sponsorship, so don't let them go to waste!

Please reach out to Advertising Committee Chair David Lucas with any inquiries about sponsorships or job postings and thank you for your continued support of the Mountain District.

The awards committee is pleased to announce the 2021 District award winners, listed on page 6 of this magazine! We received nominations for many great candidates, sections/chapters, and papers, and we look forward to what future years will bring.

Feel free to reach out any time if you are interested in getting involved with the committee or if you have any questions about any of the awards.

Awards Committee

Chair: Joey Paskey
(jpaskey@lasvegasnevada.gov)

Mountain District Committee Updates

Annual Meeting Committee

Chair: Lee Cabell
(lee@horrocks.com)

The Annual Meeting Committee is working feverishly with ITE International to pull together last minute items for the July virtual meeting. The MD will host the following activities:

- Annual Board Meeting – July 8, 1-5 pm
- Annual Business Meeting – July 20, 12:30-1:30 pm
- MD Virtual Social Event – July 22, 3:30-4:30 pm
- MD members should have received an email with a registration link to all of the above. If not, please check the MD website for additional information.

Other activities the AMC is working on include:

- Working the Boise LAC on preparations for the 2022 MD Annual Meeting in Boise, ID on June 8-10, 2022.
- Preparing a LAC Guidance manual to assist future LACs on all things annual meeting related to help assist with proper planning and execution to ensure successful meetings
- Working with the Executive Committee on future meeting locations and dates. Draft recommendations include St. George, UT in 2023, Denver, CO in 2025 (joint meeting with ITE International) and Santa Fe, NM in 2026. We do not currently have a 2024 site selected so if there is a Section out there that would like to showcase your Section and host a meeting in 2024, please reach out to Lee Cabell (lee @horrocks.com).

We are also looking for a representative from Nevada to serve on our committee. If one of our NV comrades has a desire, please reach out and become involved.



Mountain District Committee Updates

Communications Committee

Chair: Deanna Haase
(Deanna.Haase@kimley-horn.com)



@ITEMountainDistrict



ITE Mountain District

Our wonderful Committee members as representatives from each Section and a Chapter meets on a monthly basis to go through how we are communicating with our members – in the form of events, emails, activities, website content, social media, job postings, etc. This is a very important touch base and every member continues to see value in the collaboration of sharing stories, ideas, and ways to make an impact with our individual memberships and as the District as a whole. While the registration and payment processes seem to be going pretty smoothly, there will inevitably be individual situations where someone cannot login or needs to change something about a registration completed. We encourage you to contact your Section/Chapter webmaster or communications@mountainite.org if you experience any challenges. We strive to make the user experience as seamless as possible and are working on a refresh here shortly to be rolled out to users soon! We have truly appreciated your partnership in the last year and a half as we work out the kinks of a new District and website platform. If you are interested in becoming more active in ITE, participating in the Communications Committee is a GREAT WAY to do it!

As of end of June 2021, there are 1,686 Mountain District Members. The Mountain District Membership Committee continues working with each Section to promote recruitment of new members and engage current members and students to support ITE's 2021-2023 Strategic Plan Membership Goals.

Public Agency Members: If you are employed by a public agency, and they have not taken advantage of ITE's Agency Membership Options, more information can be found here:

<https://www.ite.org/membership/agency-members/>

Call for Members!: If you would like to be featured or would like to recommend another member for the Member Spotlight in the Quarterly Magazine, or if you have any other ideas or want to volunteer for the committee, please contact Lindsay Saner (lindsay.saner@kimley-horn.com).

Membership Committee

Chair: Lindsay Saner
(lindsay.saner@kimley-horn.com)

Mountain District Committee Updates

Student and Young Professionals Committee

Chair: Christopher Sobie
(CSobie@crgov.com)

The Mountain District Student and Younger Member Committee had another successful academic year. Our data collection RFP was awarded to Brigham Young University and the University of Colorado, Denver. Our 2021 Student Leadership was hosted by Montana State University and was well attended. We continue to meet monthly and are always looking for additional volunteers.

We had submissions for each of our six awards and will pass along the Student Chapter, Student Chapter Momentum, and Student Paper award to ITE International for consideration for International Prizes. Winners of awards will be announced soon at the Mountain District Annual Business Meeting on Tuesday, July 20th. We are proud to announce the 2022 Mountain District Student Leadership Summit will be hosted by University of Las Vegas.

Our committee is also working on initiatives for Younger Members including our own Mountain District Mentor/Mentee program. The goal will be to connect young professionals across the District. If you would like to support our committee, please feel free to contact me at students@mountainite.org. Thanks for your continuing support.





PROVIDING VALUE FIRST



COMPANY PROFILE:

Y2K serves public and private agency clients from offices in Arizona and Colorado. We focus on the safety and the mobility of people, whether they travel by motorized vehicles, transit, bike, foot or shared mobility. Y2K offers extensive expertise in transportation planning, safety analysis and countermeasures, traffic studies, bicycle and pedestrian facility design, traffic engineering, microsimulation, traffic signal design, lighting design, and intelligent transportation systems. Y2K has the experience and expertise to innovate and provide context-sensitive solutions from concept to successful completion. Y2K plans, designs, and manages projects with one mission in mind - to provide value to our clients.



PLANNING

- Transportation Planning
- Complete Streets
- Active Transportation
- Traffic Signal Prioritization
- Performance Based Planning
- Master Plans
- Corridor



SAFETY

- Crash Analysis
- Proven Countermeasures
- Road Safety Assessments
- Intersection Improvements
- Corridor Improvements
- Systemic Safety Improvements
- Pedestrian / Bicycle
- Vision Zero



TECHNOLOGY

- Concept of Operations
- Systems Engineering
- Systems Evaluation
- Bluetooth/Wi-Fi Sensors
- Active Traffic Management



DESIGN

- Traffic Signal
- Roadway
- Lighting
- Pedestrian
- Hybrid Beacon
- BikeHAWK
- RRFB/CRFB
- Signing
- Pavement Marking
- Traffic Calming
- Traffic Control
- ITS



STUDIES

- Traffic Impact Analysis
- Traffic Operations
- Safe Routes to Schools
- Before/After & On/Off
- Origin-Destination
- Travel Time
- Parking
- Speed
- Capacity Analysis
- Crosswalk Warrants
- Signal Warrants
- Data Analytics



Transportation News

Bipartisan Infrastructure Framework Announced

President Joe Biden and a bipartisan group of senators reached a compromise June 24, 2021 to modernize the nation's transportation and public works systems. The \$1.2 trillion plan includes \$579 billion in new spending on physical infrastructure over the next eight years, including roads, bridges, rail, water and sewer pipes, broadband internet, and electric vehicles. Additional investments will be made in clean power infrastructure, remediation of legacy pollution, and resilience to the changing climate. The Framework will be financed through various methods, but will not include a gas tax increase or a corporate tax hike.



Image: Darlene Danehy Yellowhair

Dallas-Houston High-Speed Rail Moves Forward

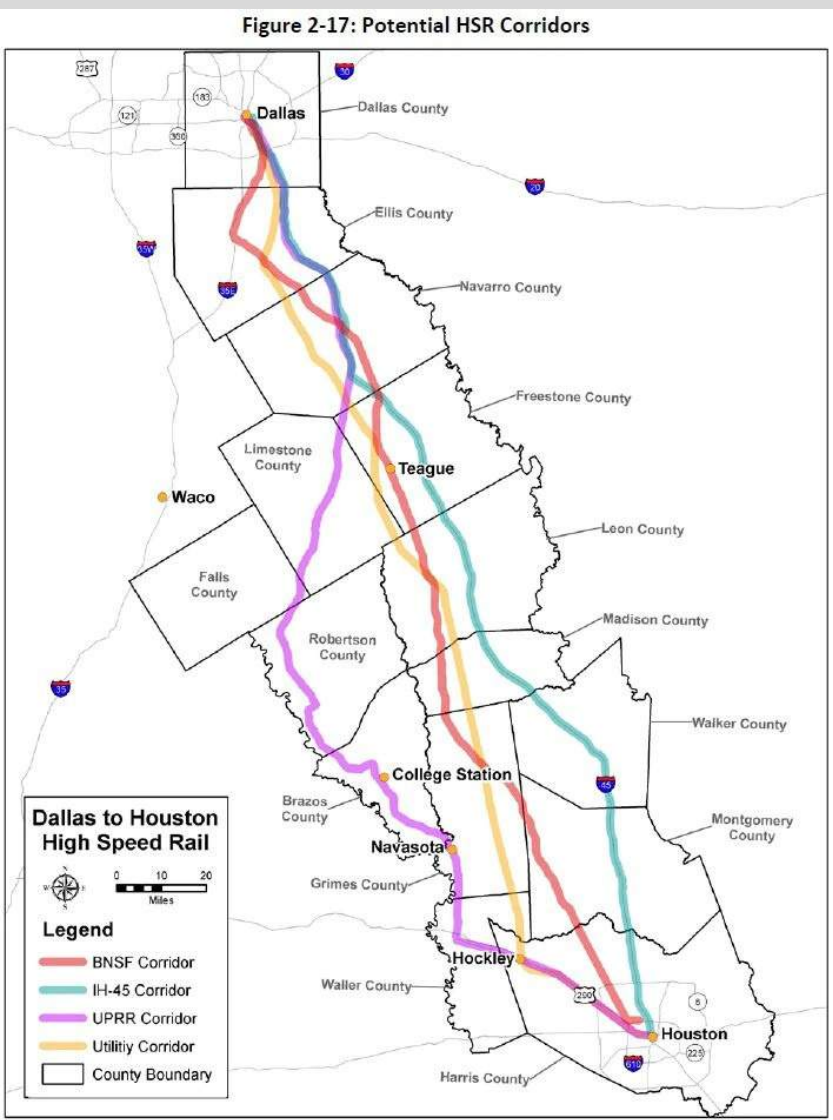


Image: AECOM via the Texas Department of Transportation

Italian contractor Webuild and its U.S subsidiary Lane Construction were selected under a \$16 billion contract to build a high-speed railway between Dallas and Houston. The project will connect the two cities in 90 minutes and will include a stop near Texas A&M University. Drive time between the two cities is approximately 3.5 hours.

The civil engineering work includes construction of 236 miles of railway, viaducts, and buildings and services for maintenance and other equipment, train depots, and other facilities. A significant portion of the railway will be elevated in an attempt to reduce the impact on residents and landowners of the counties through which the new rail will pass.

.....
In other rail news, the Santa Clara Valley Transportation Authority and BART are extending heavy-rail passenger service southward from Silicon Valley into Santa Clara County. The extension will add 16 miles of new tracks and 6 new BART stations.

Transportation News

Colorado Gets New Funding Plan and Innovative Congestion Management Program



Image: Office of Governor Jared Polis

Colorado Governor Jared Polis signed a \$5.4 billion transportation funding bill into law, with funding for fixing and maintaining Colorado's roads and bridges. The bill, Sustainability Of The Transportation System, includes \$3.8 billion from new fees over 10 years and \$1.6 billion from state budget transfers and federal stimulus dollars. The new fees include gas tax increase, beginning t 2 cents and increasing up to 8 cents by 2028.

Also in Colorado, the Smart 25 Managed Motorways Pilot Program will be launched soon by state transportation officials. The program will deploy coordinated ramp metering on a 14-mile stretch of northbound I-25 between University Boulevard in Denver and Ridgeway Parkway in Lone Tree. Many on-ramps currently have metering, but the existing system does not allow for real-time adjustments. The system will be modeled after an existing system in Melbourne, Australia. Read more about the project [here](#).

Road Safety: Racial Disparities and Pandemic Trends

The Governors Highway Safety Association recently issued a new report that analyzed crash data from 2015-2019 and found that traffic fatalities disproportionately affect Black, Indigenous, and People of Color. American Indian/Alaskan Native had a substantially higher per capita traffic fatality rate than all other racial groups as well as the highest per-capita speeding-related fatalities, pedestrian fatalities, and bicyclist fatalities. The report can be downloaded [here](#).

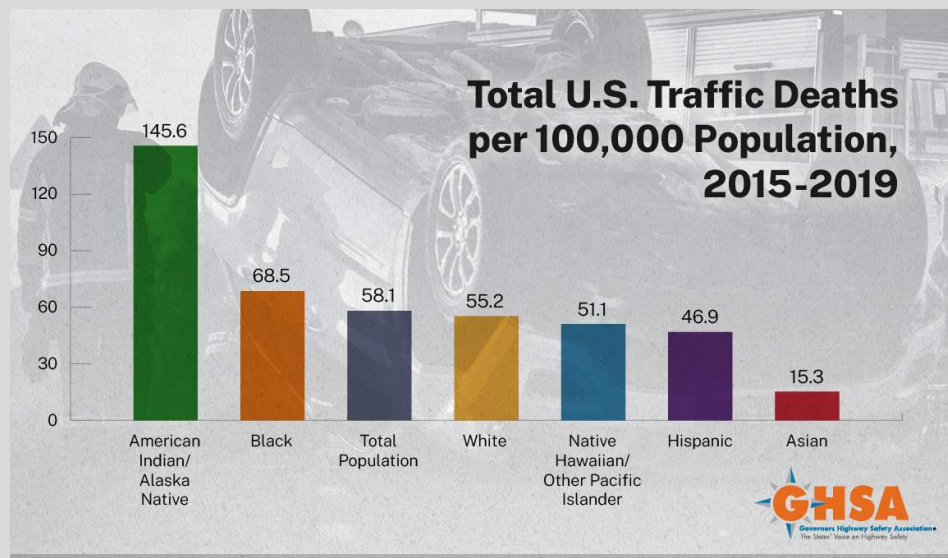


Image: Governors Highway Safety Association

Another new report from the National Highway Traffic Safety Administration found that traffic fatalities increased over 7% from 2019, despite the significant decrease in travel during the pandemic. In 2020, the Federal Highway Administration showed a decrease in Vehicle Miles Traveled (VMT) of over 13%. The increase in fatalities has been attributed to risky driving behaviors such as impaired driving, speeding, and not wearing a seat belt.

Section/Chapter Updates

Arizona Section

The Arizona Section continued to hold virtual meetings in April and May, when we featured presentations on the AASHTO Bike Guidelines by Toole Design Group and the Future City Competition team from Billy Lane Lauffer Middle School, which won this year's **Best Multimodal Transportation System** award. We also continued our partnerships with other organizations, including a joint meeting between the Arizona ITE Young Professionals Committee and the ASCE ASU Student Chapter and co-sponsorship of the inaugural Arizona Student Transportation Summit with ITS Arizona.

The Arizona Section is extremely proud to announce that our very own President, **Yung Koprowski, P.E., PTOE, RSP1** was selected as **ITE's Young Member of the Year**. As a member of the first class of **ITE Young Leaders to Follow**, Yung was part of an outstanding group of young leaders from across the industry, but stood out from among her peers as a result of her remarkable professional, ITE and community accomplishments at this early stage of her career.



Yung Koprowski, P.E., PTOE, RSP1

Finally, at long last, the Arizona Section held our first in-person event in June, which was a service event at Feed My Starving Children, followed by a fun get-together at a local brewery for food and drinks. We had an excellent showing at both events and it was great seeing each other in person to share stories and catch up. We have several more events planned for this fall and look forward to seeing our membership in person even more in the future!

Southern Arizona Chapter

The Southern Arizona chapter of ITE will continue to meet virtually every month through at least August. The virtual platform worked well in April, as Michelle Montagnino, Assistant Division Manager for Pima County Maintenance and Operations Division, showed the online audience how Pima County uses the cloud-based traffic signal management system, MioVision, to manage its traffic signals. She was assisted by Oro Valley MioVision users, GJ Anderson and Joshua Iosue.

The virtual spotlight illuminated Downtown Tucson in May, when Dave Burbank and Kyle DeWitte (City of Tucson) along with Brent Kirkman (HDR) discussed the major construction projects that have been ongoing. These include the Broadway Boulevard reconstruction and the Downtown Links project.

Speaking of illumination, SAITE hosted a roundtable discussion in June with LED street lighting experts Chris Monrad (Monrad Engineering), Jessie Sanders (City of Tucson), and Karim Rashid (Arizona Department of Transportation). This was an information-packed presentation, full of insights from practical experience.

SAITE organizes some of the most interesting, informative and diverse topics being presented virtually or otherwise!

Section/Chapter Updates

Idaho Section

The Idaho section has kept busy during the first half of 2021. We hosted five virtual meetings with an average attendance of 64 attendees. One of our meetings had over 90 participants learn about the an innovate approach to peanut roundabouts! Our section has also appointed Allen Ziesman of Horrocks Engineering to be our Social Chair and Student Liaison. We are excited for Allen to join our team. Additionally, our conference planning committee is meeting and making plans to welcome you all to Boise for the Mountain District Meeting in 2022.

Looking ahead, our section is planning our annual conference in September. This will be our first in person meeting in over a year and we are excited to see everyone again. We plan to offer a full day conference, complete with PDH opportunities, vendor interactions and a golf scramble. As we transition into the fall we will host our monthly luncheons and begin a strategic planning effort.



Nevada Section



The ITE Nevada Section started the year off swearing in the new Section Executive Committee at the January 21st, 2021 meeting. These members consist of Baillie Keach (President), Ati Abad (Vice President), Christina Richter (Secretary-Treasurer), Paul J. Villaluz (Past Present), and Kondala Rao Mantri (Mountain District Nevada Section Representative).

Since the January meeting, our officers have been busy securing some of the top individuals in the community to discuss some amazing topics at the monthly luncheons. These individuals/ topics are listed below:

- Ian Machen with Ludian USA presented on “The Nuts and Bolts of Implementing Adaptive Traffic Signal Control” at the February luncheon.
- Ed McGuire, the Public Works Director with the City of Henderson, presented on “The Progress of the Henderson Event Center” at the March luncheon.
- Kristina Swallow, The Director of the Nevada Department of Transportation, presented on “Our State Transportation System, Safe & connected through COVID and the Future” at the April Luncheon
- Chris Barker with CBC presented on “The Suntrax AV Test Track in Florida” at the May luncheon

The Nevada Section took a break from luncheons in June to group back together and start planning in person meetings and events starting back up in July. We are looking forward to seeing everyone at the first in-person luncheon in over a year!

Section/Chapter Updates

Montana Section

The first half of 2021 has been another test of adaptation for many, including the Montana Section. Our Section began the year with the successful submission and selection of the **NEW ITE Montana Section Logo**. With a new logo in place, we have charged ahead aligning the Section with its new responsibilities to encourage education, foster professional collaboration, and provide meaningful engagement opportunities to our members.



Our Board has been working diligently behind the scenes to bolster the role of the Section. The first product of their work will be an **updated website**, that will provide users with more resources and information related to the Section. Keep an eye out for the changes in July 2021 and these updates will be ongoing as additional opportunities arise. Other significant **changes coming to the Section** include; yearly member awards, scholarship opportunities, regular communication updates from the Board, engagement through committees and activities, stronger student support and outreach, and regularly scheduled gatherings and presentations.

The Section's sole Student Chapter, at Montana State University, successfully held the **first Mountain District Student Leadership Summit** virtually in April. Feedback from the District was overwhelmingly positive and congratulations goes out to the dedicated students with MSU ITE! Contributing to the goal of regularly scheduled presentations, the Section has hosted two in the first half of 2021. In February we welcomed **Lloyd Rue and Alan Woodmansey** from the Federal Highway Administration where they gave an overview of the federal transportation program and the closely watched infrastructure bill in the US Congress. Our Section then held a **joint presentation with the ITE North Central Section** in March where **Liz Wunderlich** from the City of Sturgis, South Dakota gave a presentation on non-motorized trails in the Black Hills.

We are looking forward to additional opportunities upcoming in the second half of 2021, including an in-person **Joint Engineers Conference**, and to continue our mission to be the Big Sky's go-to network for transportation professionals!

New Mexico Section

It's a hot one here in New Mexico! But not as hot as the local New Mexico red & green chile we know and love. As we near a very warm summer, the NM section of ITE is starting our yearly summer break. Over the spring we have experienced success in virtual meetings and hope to maintain that momentum when we pick back up in the fall. At the moment, we plan to hold in-person meetings beginning in the fall. We have several speakers lined up already and we look forward to seeing everyone again in person.

This summer, the New Mexico section is working on potentially organizing a bike & brew social event in Albuquerque, NM. Albuquerque is home to several wonderfully maintained multi-use trails that parallel the Rio Grande offering a pleasant riding experience for local Burqueños. With several breweries located either directly on these trails or within a short distance, this event should be a great way to see our fellow members and affiliates in person for the first time in over 15 months.



**TRAFFIC ENGINEERING
DESIGN**

*Arizona's Leader in Providing
Comprehensive Traffic Engineering Design
and Transportation Planning/Analysis*

**TRANSPORTATION
PLANNING/ANALYSIS**

Traffic Signals

Roadway and Pedestrian Lighting

Uplighting/Artpad Lighting

Pedestrian Signals (e.g. H.A.W.K.)

Railroad Signal Crossings

Roadway Signing & Pavement Marking

Traffic Calming

Traffic Control

Roundabouts

Technical Review



Transportation Modeling

Access Management Guidelines

Design Concept Reports

Traffic Impact Analyses

Parking Analyses

Corridor Studies

Pedestrian Circulation Evaluation

Safety Analyses

Transit Planning

Bicycle Route Planning



Welcome to ITE!

The following members joined ITE and the Mountain District between April and June 2021. Welcome to all!

Arizona Section

brahim Alhassan - Student, Arizona State University

Bret Burkes - Transportation EIT, Stanley

Ammon Heier - Transportation Engineer, Federal Highway Administration

John Kraft - Civil Engineer, Pinal County Public Works Department

Colorado/Wyoming Section

Bob Bonds - Highway Engineer, Federal Highway Administration

Devon Brazeal - Olsson Road & Bridge

William Haas - Federal Highway Administration

Arash Khoda Bakhshi - Student, University of Wyoming

Eric Mocko - Transportation Engineer, City of Grand Junction

Idaho Section

Brian Bustos - Engineer, Kittelson & Associates

Eric Jensen - Transportation EIT, HDR

Montana Section

Chad Welborn - MDT/MSU Design Manager, Montana Department of Transportation

Nevada Section

Gene Ramos - Associate Vice President, HNTB

Utah Section

Nicole Adams - Student, Brigham Young University

Tomas Barriga Aristizabal - Student, Brigham Young University

Todd Finlinson - Traffic Engineer, Utah Department of Transportation

David Jensen - Traffic Engineer, Utah Department of Transportation

Karen Roylance - Signals Engineer, Utah Department of Transportation

WELCOME

Member Spotlight

In each issue, we will highlight one or two members of our District. This month, we talked with Victoria Edington, who was recently named a 2021 Mountain District Rising Star!

Victoria is a problem solver. Bringing innovative, pragmatic solutions to timing and modeling projects, her work on traffic engineering and transportation design projects often reflects this passion. Whether it's finalizing a microsimulation model to visualize a new freeway interchange or tweaking signal timing to get more vehicles through an intersection, she excels at fitting all the pieces of the puzzle together. Her experience also includes corridor studies, travel demand modeling, and multimodal transportation analysis.

Already recognized by the industry, Victoria was honored by the Institute of Transportation Engineers (ITE) Mountain District with their 2021 Rising Star Award, and was awarded the Best Paper Award at the 2016 ITE Western District Annual Meeting for her presentation on multi-modal signal timing for a new light rail corridor in Aurora, Colorado. Always mindful of the next generation of engineers, Victoria serves as the professional liaison to collegiate chapters of ITE around Colorado and Wyoming.

Victoria Edington

1. How long have you been a member of ITE and why did you join?

I first joined ITE in the fall of 2010 while I was a student at Cal Poly San Luis Obispo. Initially, it was just because we got extra credit in the Intro to Civil Engineering class if we joined a student group, but I loved the group and the activities we did together so much that I stuck with it all four years. With them, I helped plan the very first ITE Student Leadership Summit and even attended a couple of Western District Annual Meetings. When I moved back home to Colorado in 2014, the industry connections and friends that I had made in ITE were enough to convince me to keep up my membership by joining the Colorado/Wyoming Section.



Member Spotlight, cont'd

Victoria Edington



CalPoly SLS SummitE

2. What is your favorite ITE memory or when/where was your favorite ITE meeting?

Being a part of the Local Arrangements Committee for the 2018 Annual Meeting in Keystone, CO was definitely a highlight of my ITE experience. Working as the Student Coordinator for that meeting was a lot of work, but it was also a lot of fun! I really enjoyed collaborating with everyone else on the LAC and figuring out ways to bring together the traditions of the Western and Texas Districts. Plus, Keystone might be able to give Honolulu a run for its money in the "Most Scenic Annual Meeting Location" competition!

3. Who do you work for and what do you do?

I work for Stantec as a Transportation Engineer in our Transportation Planning/Traffic Engineering group. My primary focus is traffic analysis and modeling, including everything from impact studies to signal retiming to advanced microsimulation modeling. The projects I've worked on have taken me all over the globe, from Charleston, South Carolina, to Vancouver, British Columbia, and even to Sydney, Australia for a whole summer.

4. What do you love most about Transportation/Traffic Engineering/Planning?

Seeing projects go from concept to reality, even when I only work on a small part of them. The idea that something I contributed to may one day have a real impact on people's daily life is daunting and inspiring at the same time.

5. How do you define success?

I feel successful when, at the end of a task, I know that I have truly put forth my best effort and done everything I can to help those around me.



Keystone LAC

Member Spotlight, cont'd

Victoria Edington

6. Who inspires you?

Tamora Pierce has been my favorite author and a source of inspiration for a very long time. Her novels taught me to believe that I can do anything, to never give up even when something is hard, to speak up for those who don't have a voice, and to find magic in the ordinary corners of the world.

7. What's one new thing - either industry-related or not - you learned in the last month?

How to play golf. I've never had any experience with the sport (unless playing mini golf counts?), but when the opportunity recently arose to participate in the ITE CO/WY Annual Golf Tournament, I decided to take a chance and play. It was a great opportunity to expand my horizons with something I've never tried before, made all the better thanks to the wonderful, understanding, knowledgeable support of my teammates. I certainly still have a lot to learn about technique and skill, but it's something I look forward to trying again in the future.

8. What's something about you (a fun fact) that not many people know?

I minored in Theatre Arts in college! Theatre (particularly stage management and design) has always been a passion of mine, and while it wasn't something I wanted to pursue professionally, I still wanted to keep it up while I was at school. Over all four years, I ended up taking enough Theatre classes and working backstage on enough shows that I qualified for a minor on top of my main degree.



9. What's the last book you read or movie you saw?

- Last Book: We Could Be Heroes by Mike Chen
- Last Movie: Black Panther at the Film on the Rocks Drive-In Movie Theatre at Red Rocks
- Last TV Show: Leverage, looking forward to Leverage: Redemption later this summer!

Know a Mountain District member you would like to see featured in our Member Spotlight? Please submit suggestions to Lindsay Saner, Membership Committee Chair (Lindsay.saner@kimley-horn.com). Submittals should include the member's name, email, company/organization.

Mountain District Sponsors

Thank you to all of our sponsors!

Founding Sponsors



District Sponsors



Western Systems

Kimley»Horn

Expect More. Experience Better.



If you want to be a sponsor...

Consider showing your support for the new Mountain District as a District or Founding Sponsor! Founding sponsorships are only available through the end of 2021. More information on sponsor benefits can be found at <https://mountainite.org/Sponsors>. Thank you for your support!

The following ads highlight our District Sponsors.

Ads for our Founding Sponsors can be found throughout the magazine.

24/7 access to O-D, volume and other metrics to help you manage transportation



GET A LIVE DEMO



matt.barkley@streetlightdata.com

SPECIAL REPORT

2020 U.S. TRANSPORTATION CLIMATE IMPACT INDEX

Get the ranked list of the Top 100 metro areas



READ the special report at:
streetlightdata.com/2020ClimateIndex



Western Systems



SUPERIOR QUALITY & DESIGN

Custom Cabinets to Fit Your Needs



Custom Design & Manufacturing

NEMA cabinets available in multiple sizes & proudly made in the U.S.



One-of-a-Kind P Plus Cabinet

Built-in battery backup compartment within the enclosure



Condensed Design

Create a smaller footprint while accommodating existing infrastructure



Save Valuable Space

Dual load switch, incorporates two switches into one



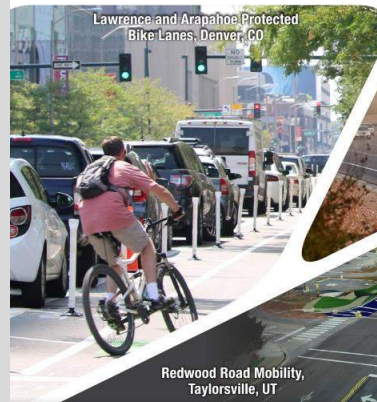
425.438.1133 | www.westernsystems-inc.com | Info@westernsystems-inc.com

- Traffic Engineering and Operations
- ITS • Transportation Planning and Design

Kimley»Horn
Expect More. Experience Better.

- Traffic Impact Studies
- Safety Studies
- Roadway Design
- Signal Timing
- Security
- Active Traffic Management
- Systems Engineering
- ITS Planning and Design
- Parking
- Telecommunications
- Master Plans
- Research and Evaluation
- Corridor Studies
- Software and Technology
- Modeling and Simulation
- Connected and Automated Vehicles
- Integrated Corridor Management
- Traffic Incident Management

We are one of FORTUNE MAGAZINE'S **100** Best Companies to Work For and have served the mountain states for **35 years**



Lawrence and Arapahoe Protected Bike Lanes, Denver, CO

I-10 Dust Detection, Pinal County, AZ

Redwood Road Mobility, Taylorsville, UT

Allegiant Stadium, Las Vegas, NV

www.kimley-horn.com

CREATING CONNECTIONS TO THE FUTURE.

The West's Full-Service Transportation and Traffic Engineering Firm

ARIZONA • CALIFORNIA • COLORADO • IDAHO
NEVADA • NEW MEXICO • UTAH • WASHINGTON

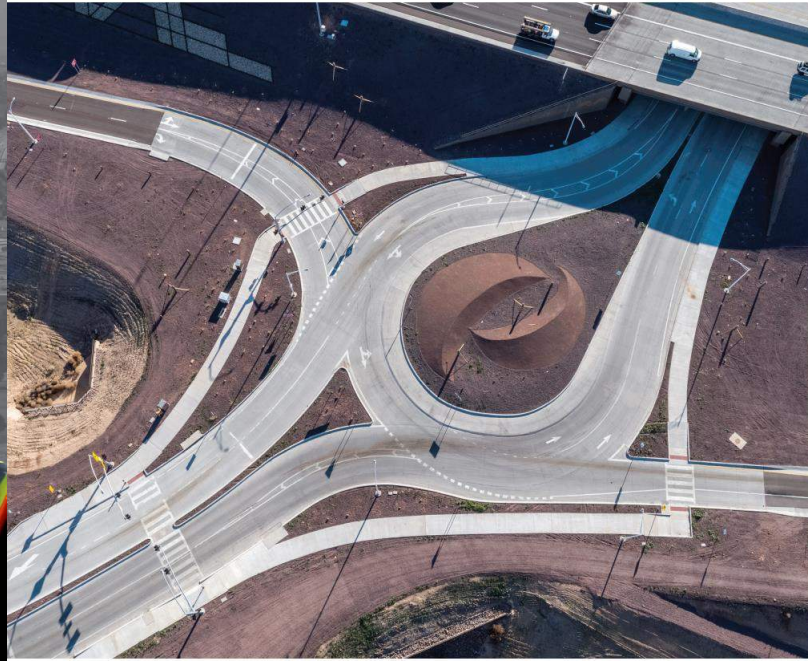
HORROCKS
ENGINEERS
www.horrocks.com
800.662.1644



Bridging the gap between idea + achievement

At HDR, we're helping our clients push open the doors to what's possible, every day.

Proud to support the Mountain District ITE
hdrinc.com



apexdesign

a CONSOR company

For the past 15 years, we've transformed the way people move through improving the efficiency and safety of transportation systems on some of the most complex and visible transportation projects. We are working together to achieve transportation goals related to mobility, equity, safety, and healthy living.

SERVICES INCLUDE:

- Transportation Planning
- Traffic Engineering
- Intelligent Transportation Systems
- Managed Lanes and Tolling
- Construction Management
- Curbside and Parking Management
- Simulation Modeling
- TSM&O
- Vision Zero and Crash Analysis
- Public Involvement
- Roadway and Highway Design
- Traffic Data Collection
- Transit Solutions
- Smart Cities
- Information Technology
- Program Management
- Telecommunications/Fiber
- Integration and Installation
- GIS and Asset Management
- Policy Development
- Multimodal Design
- Hydraulics and Hydrology
- Bridge and Structure Design
- Structural Assessment
- Water and Wastewater

NAVJOY

CLOUD SOLUTIONS

ASSETGOV

Real-time infrastructure asset management, solution data collection, inventory management, assessments and life cycle management.

SMARTDATAGO

Use this platform to track, share, analyze, and communicate data and documents across departments and agencies.

WORKZONEGO

Track all work zones impacting your roadways and share real-time closure information with other agencies, Waze, and the traveling public.

RESPONDERGO

Manage and share real-time traffic incident management information between agencies such as responder and agency contacts, response plans, AARs, etc.

SERVICES

- ITS, TSM&O and TMC Operations
- Fiber, Network and Security Operations
- Traffic Studies
- Asset Inventory Collection
- Software and Website Development

PRODUCTS

- Switches
- Firewalls
- Cameras
- More

DBE Certified in Arizona, Colorado, Nevada, Utah, & Wyoming

Contact Navin

- ☎ 303.993.0755
- ✉ nnageli@navjoyinc.com
- 🌐 linkedin.com/in/navin-nageli-b64797a

Contact Navjoy

- 🌐 navjoyinc.com
- 🌐 linkedin.com/company/navjoy-consulting-services-inc.
- 🐦 twitter.com/navjoy

A proud supporter of ITE

apexdesignpc.com



Traffic and ITS Ninjas



You not only need data fast,
**YOU NEED IT
TO BE RIGHT.**

- Tolling and Managed Lanes**
 Our team works with owners, contractors and toll system integrators to provide detailed design, scheduling, testing and implementation oversight for toll systems.
- Construction Support Services**
 Through construction management, inspection, quality control and post-design services, we support our clients in delivering their critical transportation projects.
- Intelligent Transportation Systems**
 As technology becomes increasingly prevalent in transportation projects, our team enables clients to realize the benefits without being slowed down by the learning curve. We take the mystery out of ITS.
- Traffic Engineering**
 We support a safe, reliable and efficient transportation network through traffic design and analysis (e.g., temporary traffic control, traffic signals, signing, striping, ramp meters, studies, HCS/Synchro analysis).
- Communication Systems**
 Linking technology and people, we specialize in documentation, planning, design and system implementation management for fiber optic and wireless communication systems.
- Detailed Design**
 Our experience with the full life-cycle of transportation projects, including maintenance and operations, allows us to keep the big picture in mind while diving into the details; and our culture of quality drives excellence.

That's why we're dedicated to providing traffic intelligence solutions and collecting critical data quickly, providing you with data that is reliable, trusted, proven, and accurate.

All Traffic Data Services, LLC (ATD) is a leading transportation data services company with nearly 20 years of experience working with public and private clients of all sizes. We are a trusted industry leader in developing an array of tailored data collection solutions for efficient, accurate, and cost-effective programs. Our solutions cover traffic counts, turning movements, origin/destination, pedestrian, radar speed, Bluetooth, parking, asset inventory, crash diagrams, and more.

We know deep, reliable data is the foundation for guiding infrastructure, transportation, and communities into the future. You can trust ATD to deliver the data to lead the way.

OFFICES IN:
 Arizona · California · Colorado · Florida · Georgia
 Nebraska · Oregon · South Carolina · Washington
303.216.2439 • alltrafficdata.net



Info@IronStrideSolutions.com

THANK YOU

MaxGreen

Transportation Engineers

**CDOT DBE, ESB - C/C Denver EBE, MWBE, SBE
ADOT & NMDOT DBE - TxDOT DBE, SBE**

Creative - Thoughtful - Responsive

P O Box 62538
Co. Springs, CO 80962
(719) 661-4127

Traffic Engineering Studies and Design
Ped/Bike Facilities Studies and Design
Quality Reviews

Karen Aspelin, PE, PTOE, Owner
PE in Arizona, Colorado, Hawaii, Idaho, New Mexico, Texas
 kaspelin@maxgreenengineers.com www.maxgreenengineers.com

THANK YOU

Mountain District Contacts

Mountain District Board

President.....	Benjamin T. Waldman Ben.Waldman@apexdesignnpc.com
Vice President.....	Devin V. Moore devin.moore@kimley-horn.com
Secretary-Treasurer.....	Danielle Scharf dscharf@sandersonstewart.com
International Director.....	Karen E. Aspelin kaspelin@maxgreenengineers.com
Past President.....	Paul A. Barricklow pbarricklow@lee-eng.com
District Administrator.....	Jenny L. Grote jennygrote@grotrans.com

Mountain District Section Representatives

Arizona Section.....	David E. Lucas david_lucas@tempe.gov
Colorado-Wyoming Section.....	Duane J. Cleere duane.cleere@aecom.com
Idaho Section.....	Jeffrey W. Jones jeff.jones@sixmile.com
Montana Section.....	Lisa Fischer lisa.fischer@hdrinc.com
Nevada Section.....	Kondala Rao Mantri Kondala.Mantri@atkinsglobal.com
New Mexico Section.....	James R. Barrera jimb@horrocks.com
Utah Section.....	Hal R. Johnson hjohnson@rideuta.com

Mountain District Committee Chairs

Advertising Committee.....	David E. Lucas david_lucas@tempe.gov
Annual Meeting Committee.....	Lee Cabell lee@horrocks
Awards Committee.....	Joey D. Paskey jpaskey@lasvegasnevada.gov
Communications Committee.....	Deanna C. Haase deanna.haase@kimley-horn.com
Membership Committee.....	Lindsay S. Saner lindsay.saner@kimley-horn.com
Students and Young Professionals Committee.....	Christopher E. Sobie CSobie@cr.gov

Mountain District Contacts

Mountain District Student Chapter Contacts

	Advisor	President
Arizona State University.....	Dr. Yingyan Lou..... yingyan.lou@asu.edu	Francisco Gutierrez fcogtz@gmail.com
Boise State University.....	Dr. Mandar Khanal..... mkhanal@boisestate.edu	Tryston Sellers trstonsellers@u.boisestate.edu
Brigham Young University.....	Dr. Grant Schultz gschultz@byu.edu	Logan Bennett loganbennett93@gmail.com
Montana State University.....	Dr. Ahmed Al-Kaisy..... alkaisy@montana.edu	Bryce Grame bryce.grame@gmail.com
Northern Arizona University.....	Dr. Ed Smaglik..... edward.smaglik@nau.edu	Katherine Riffle krr264@nau.edu
University of Arizona.....	Dr. Yao-Jan Wu..... yaojan@arizona.edu	Adrian Cottam acottam@email.arizona.edu
University of Colorado, Denver.....	Dr. Wesley Marshall..... wesley.marshall@ucdenver.edu	None at this Time N/A
University of Idaho, Moscow.....	Dr. Kevin Chang..... kchang@uidaho.edu	Meeloud Alhasyah alha2886@vandals.uidaho.edu
University of New Mexico.....	Dr. Nick Ferenchak..... ferenchak@unmedu	Sheheryar Shafique sshafique@unmedu
University of Nevada, Las Vegas.....	Dr. Shashi Nambisan..... shashi@unlv.edu	Justin de Leon deleoj8@unlv.nevada.edu
University of Nevada, Reno.....	Dr. Zong Tian..... zongt@unr.edu	Matthew Boog mboog16@nevada.unr.edu
University of Utah.....	Dr. Xiaoyue Cathy Liu..... cathy.liu@utah.edu	Zhiyan Yi zhiyan.yi@utah.edu
University of Wyoming.....	Dr. Mohamed Ahmed..... mahmed@uwyo.edu	Arik Das adas4@uwyo.edu
Utah State University.....	N/A N/A	N/A N/A



Be sure to check
mountainite.org for all the
latest news and events!