

NE/SE CONNECTOR ROAD(S) PROJECT

Presentation:

NMITE

December 5, 2024

Presented By:

Matthew Nighbert – Souder, Miller & Associates





AGENDA

PROJECT TEAMS

LOCATION & LAYOUT

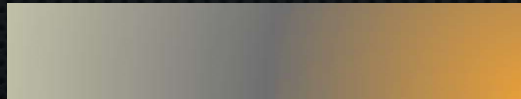
ROADWAY IMPROVEMENTS

DRAINAGE & ENVIRONMENTAL

SPUR TRAIL & WALKING PATHS

WATERLINE EXTENSION

QUESTIONS & THANK YOU





CONSTRUCTION TEAM

- **AUI** – Prime Contractor
- **Souder, Miller & Associates** – Construction Administration
- **Horrocks** – Construction Management (initial)

DESIGN TEAM

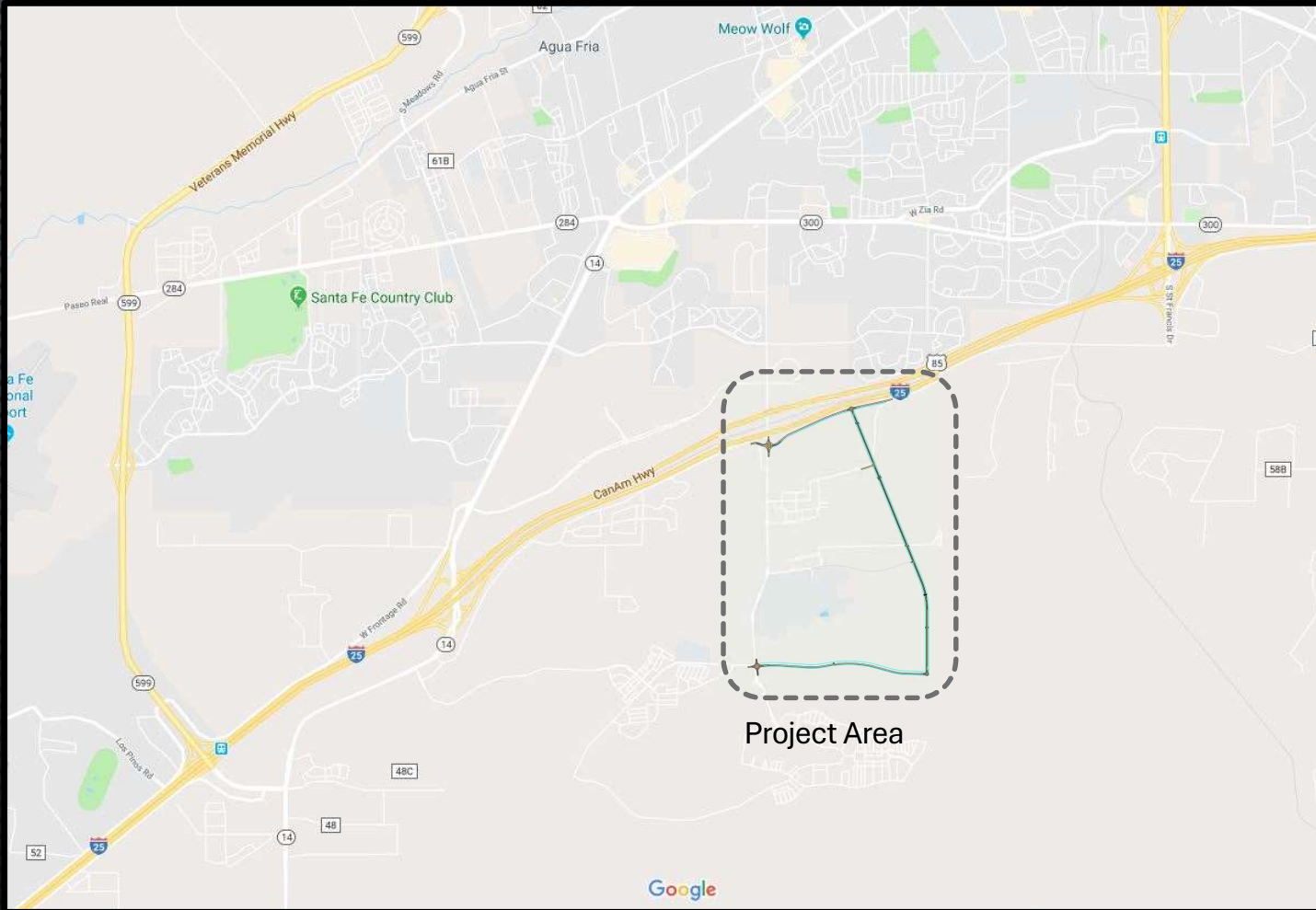
- **Souder, Miller & Associates** – Prime Consultant (design)
 - **T2 Utility Engineers** – Subsurface Utility Engineering (SUE)
 - **Ecosphere Environmental Services** – Environmental
 - **Geo-Test, Inc.** – Geotechnical Engineering
 - **Mike Henderson Consulting** – Traffic Data Collection
 - **eRMSi** – Traffic forecasting and modeling

STUDY TEAM

- **OCCUM Consulting Engineers, Inc.** – Prime Consultant (study)
 - **Tibbetts Surveying** – Surveying
 - **Cooper Aerial Survey** – Aerial Photography
 - **Marrion & Associates** – Environmental Survey/Reporting, CE

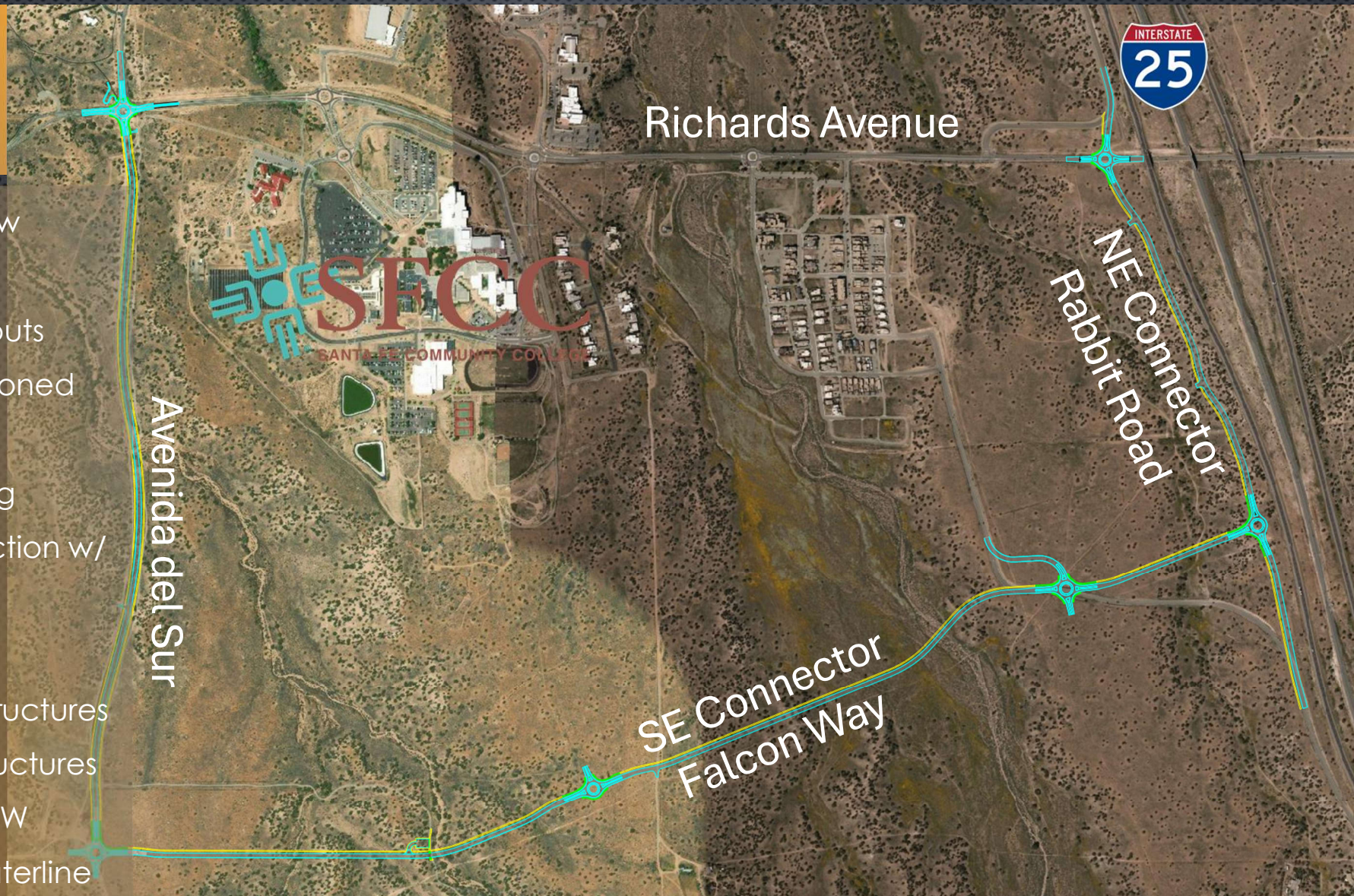


VICINITY MAP



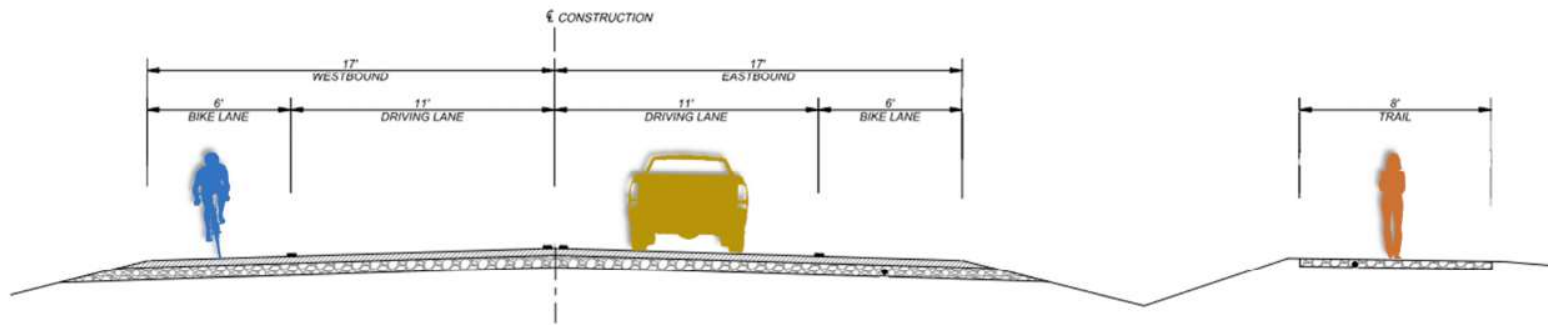
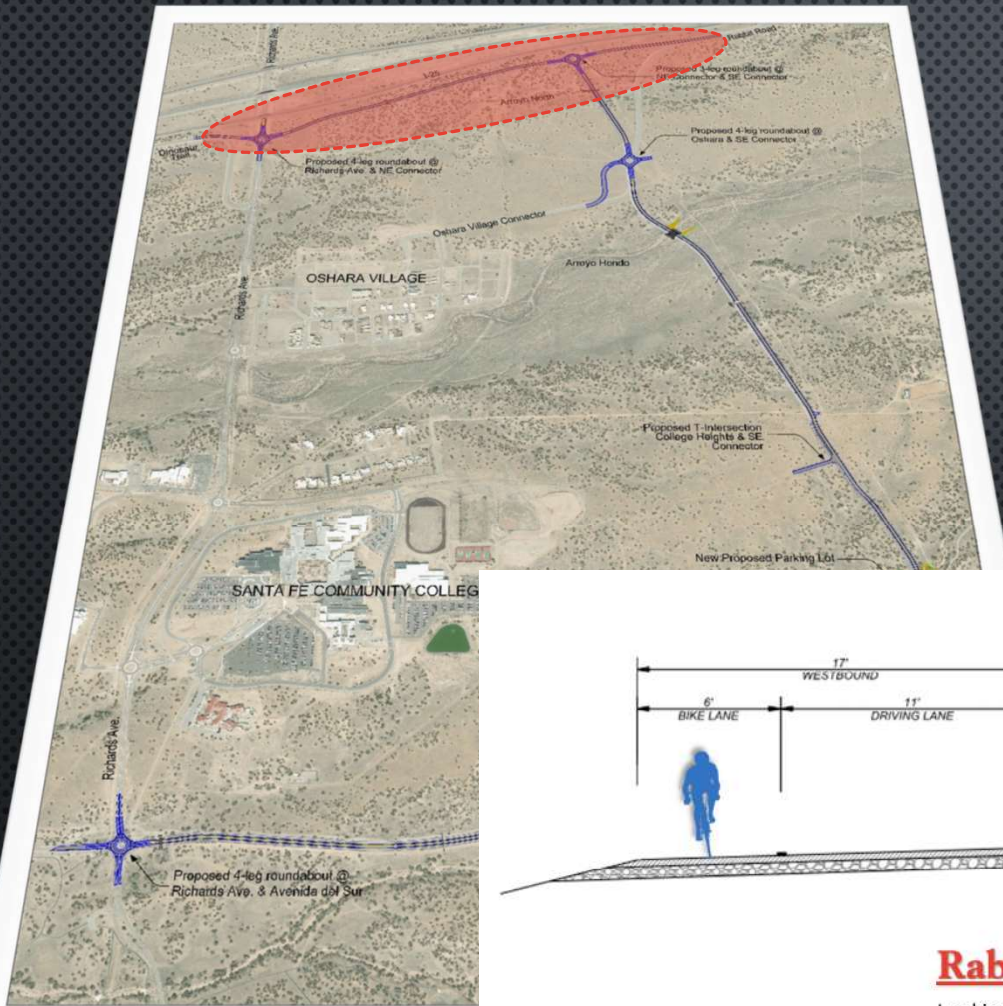
PROJECT LAYOUT

- 3.7 miles New Roadway
- 6 Roundabouts
- Decommissioned Signal
- Solar Lighting
- Trail Connection w/ Parking Lot
- 3 Significant Drainage Structures
- 36 Other Structures
- 55 Acres ROW
- 1.6 miles Waterline



RABBIT ROAD

✓ Rabbit Road/NE Connector
0.95 miles



Rabbit Road Section

Looking East

Drone flight 2018



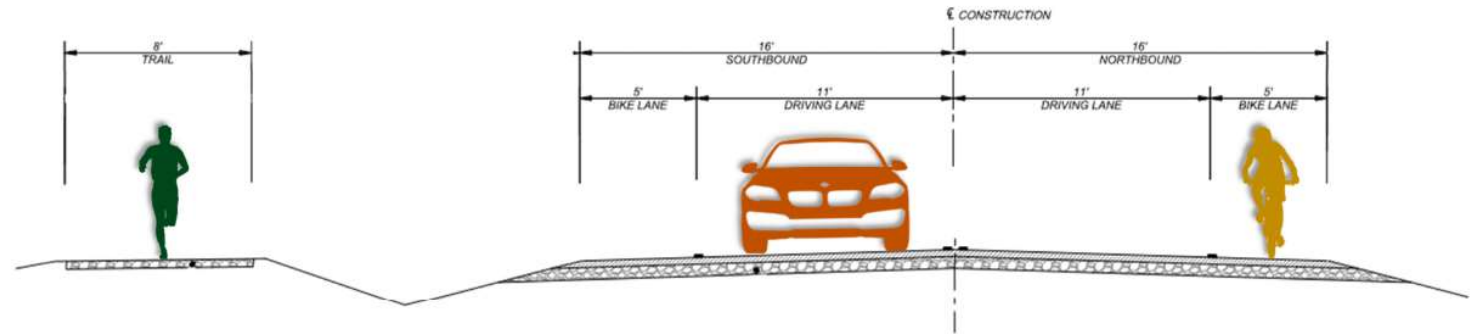
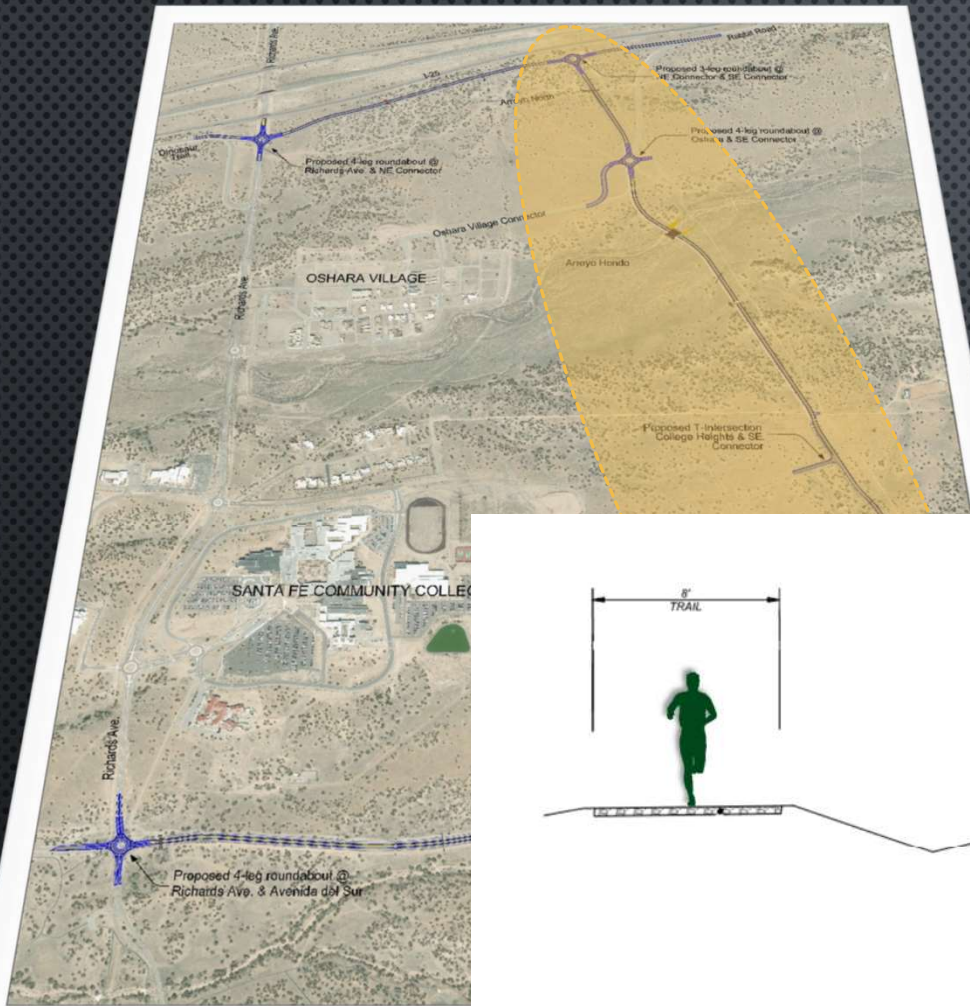
Google Earth 2023



RABBIT ROAD / NE CONNECTOR

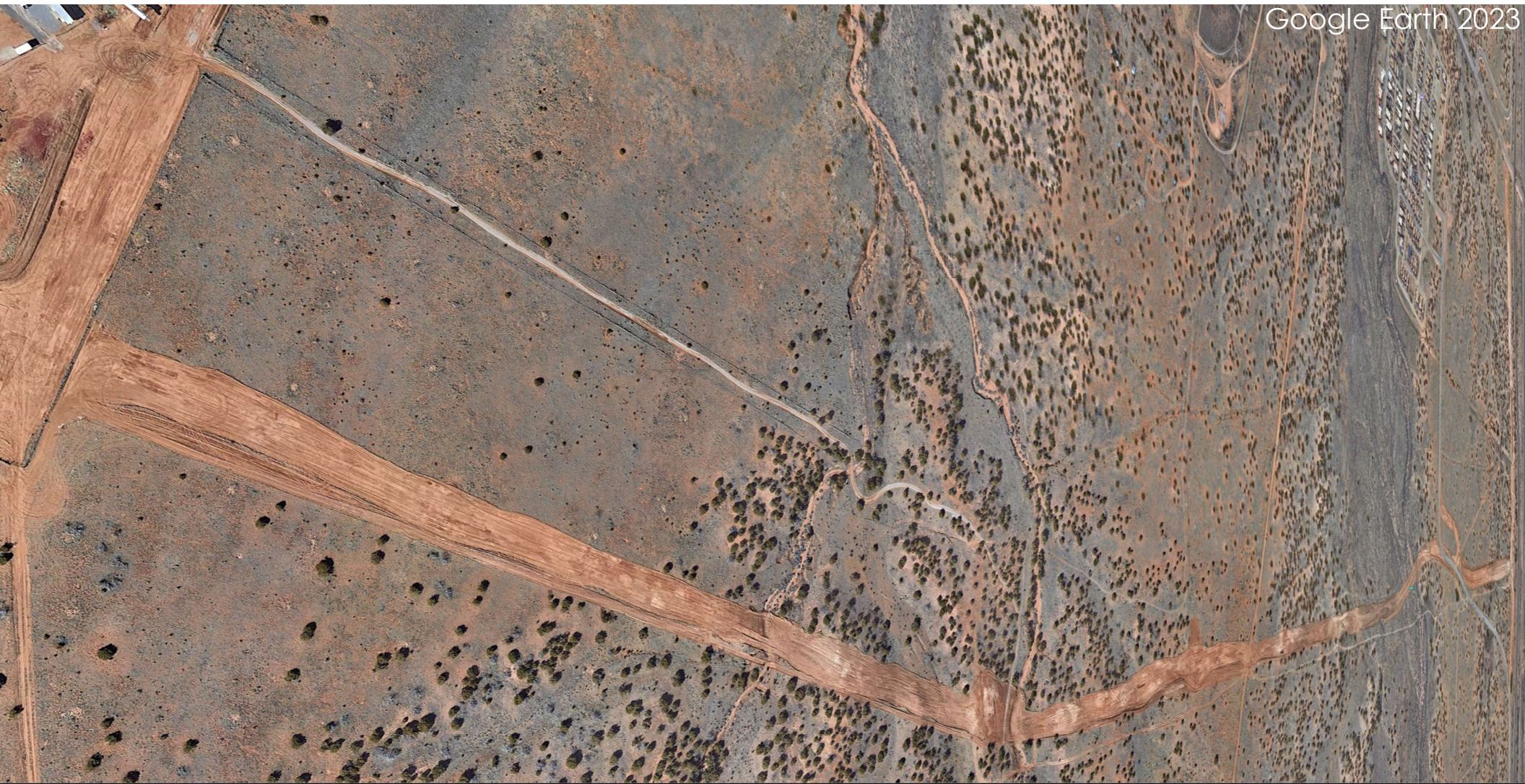
FALCON WAY

✓ Falcon Way/SE Connector
1.6 Miles



SE Connector Section

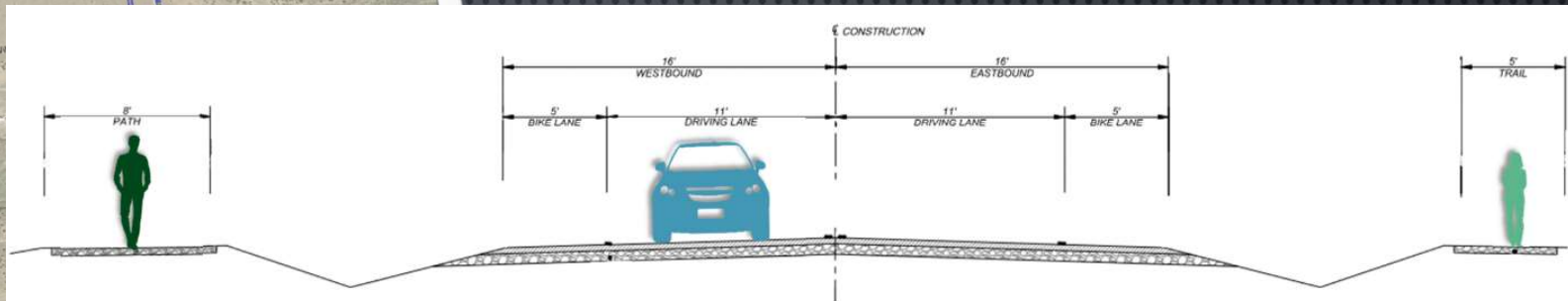
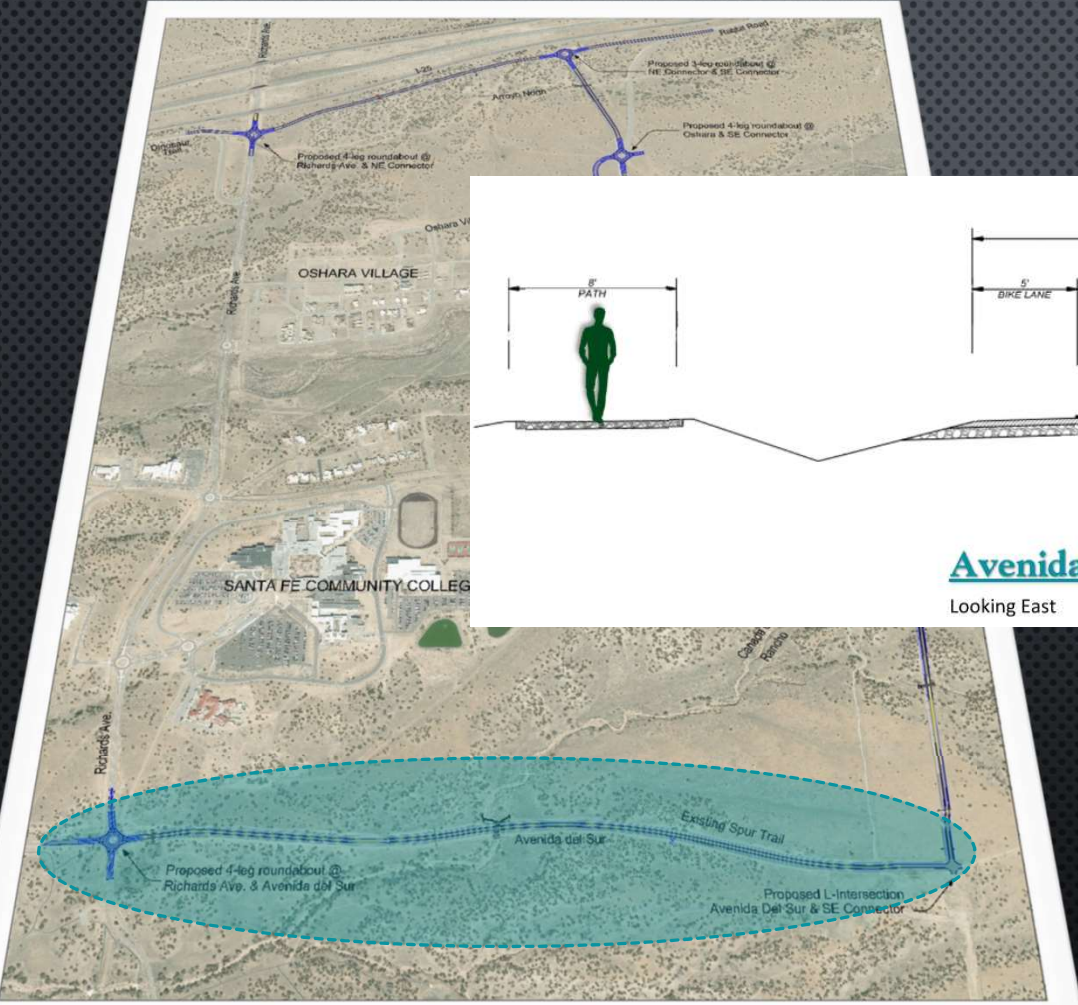
Looking North



FALCON WAY/ SE CONNECTOR

AVENIDA DE SUR

✓ Avenida del Sur
1.08 miles



Avenida del Sur Section

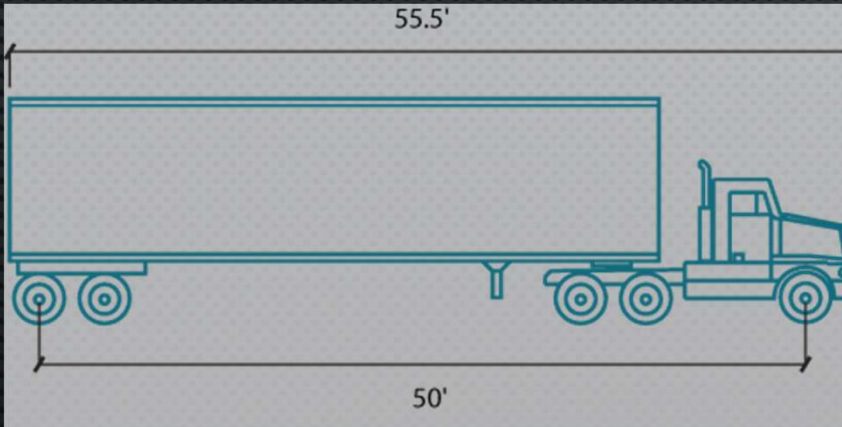
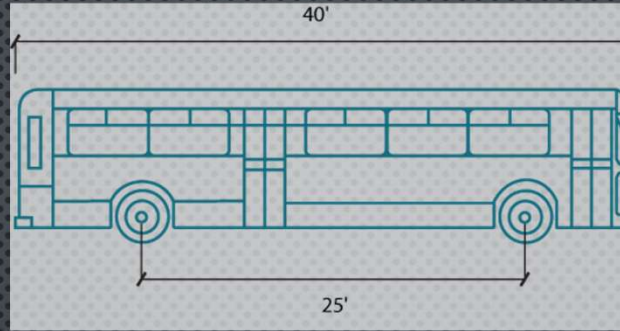
Looking East



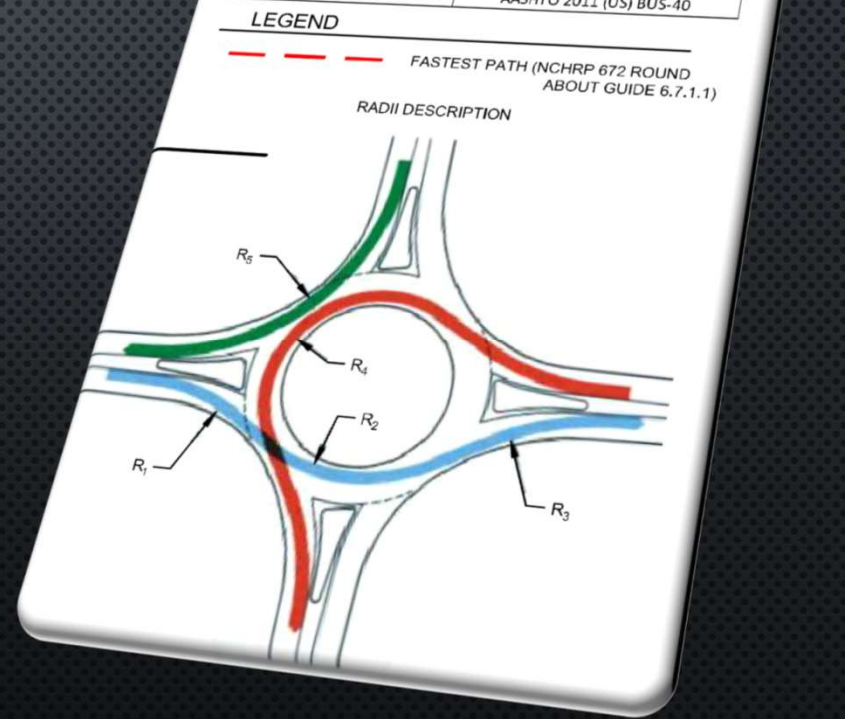
AVENIDA DEL SUR

ROUNDAABOUT DESIGN

- TRAFFIC COUNTS
- TRAFFIC FORECASTING/MODELING
- INTERSECTION DESIGN (TIPPED PLANE)

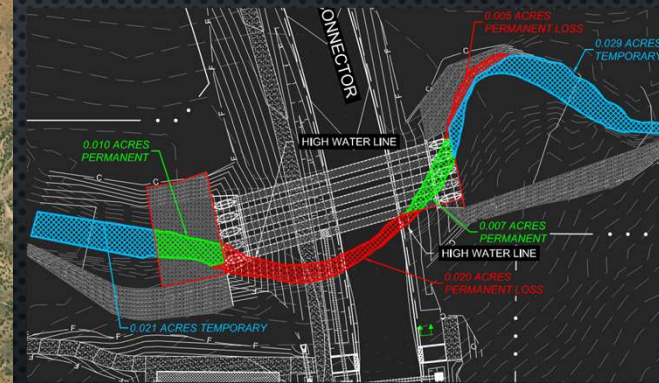
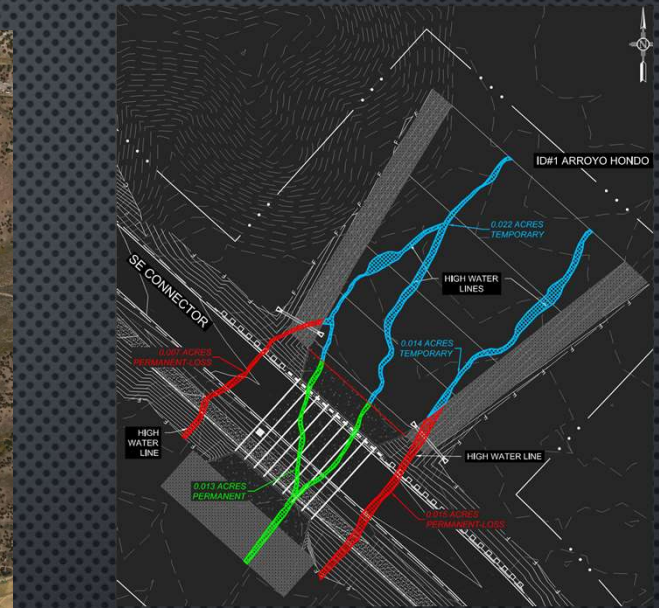
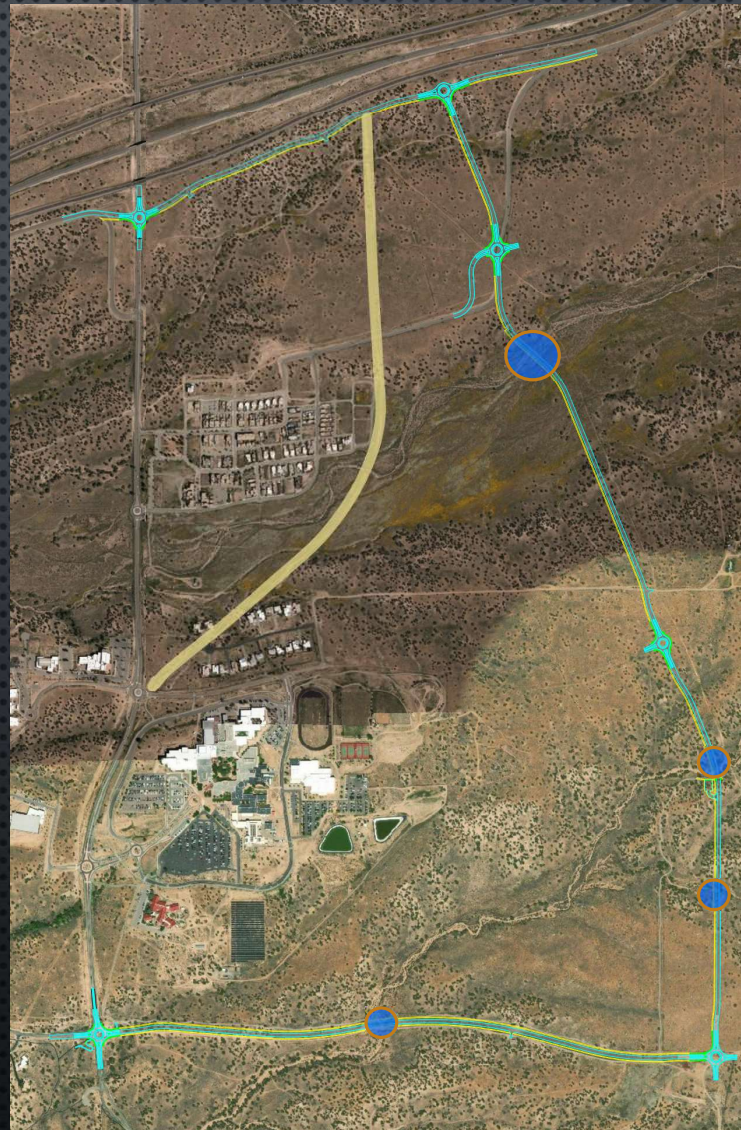
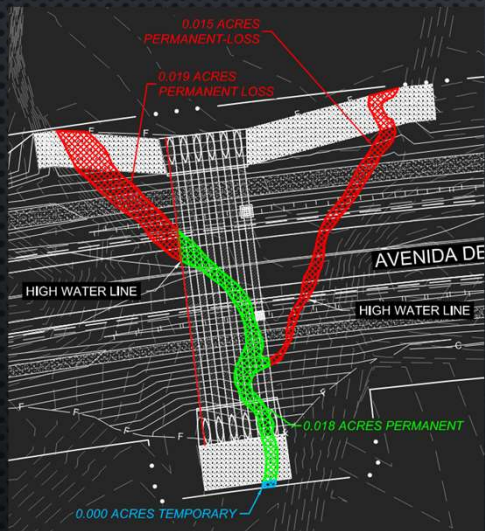


Roundabout Parameters	
RA01 - Richards Ave./Dinosaur Trail/Rabbit Rd.	
Design Guideline	FHWA 2010 - Single Lane WB-50
Central Island Location (x,y)	(Northing = 1680660.9548, Easting = 1714583.1115)
Central Island Diameter	66 ft
Inscribed Circle Diameter	130 ft
Circulatory Roadway Width	16 ft
Number of Circulating Lanes	1
Circulatory Radius	52.5 ft
Truck Apron Width	12 ft
Design Vehicles	AASHTO 2011 (US) BUS-40
Theoretical Edges	AASHTO 2011 (US) BUS-40
Circulatory	AASHTO 2011 (US) BUS-40
Splitter	AASHTO 2011 (US) BUS-40
Speed	AASHTO 2011 (US) P
Lane	AASHTO 2011 (US) BUS-40
Apron	AASHTO 2004 (US) WB-50
Bypass	AASHTO 2011 (US) BUS-40



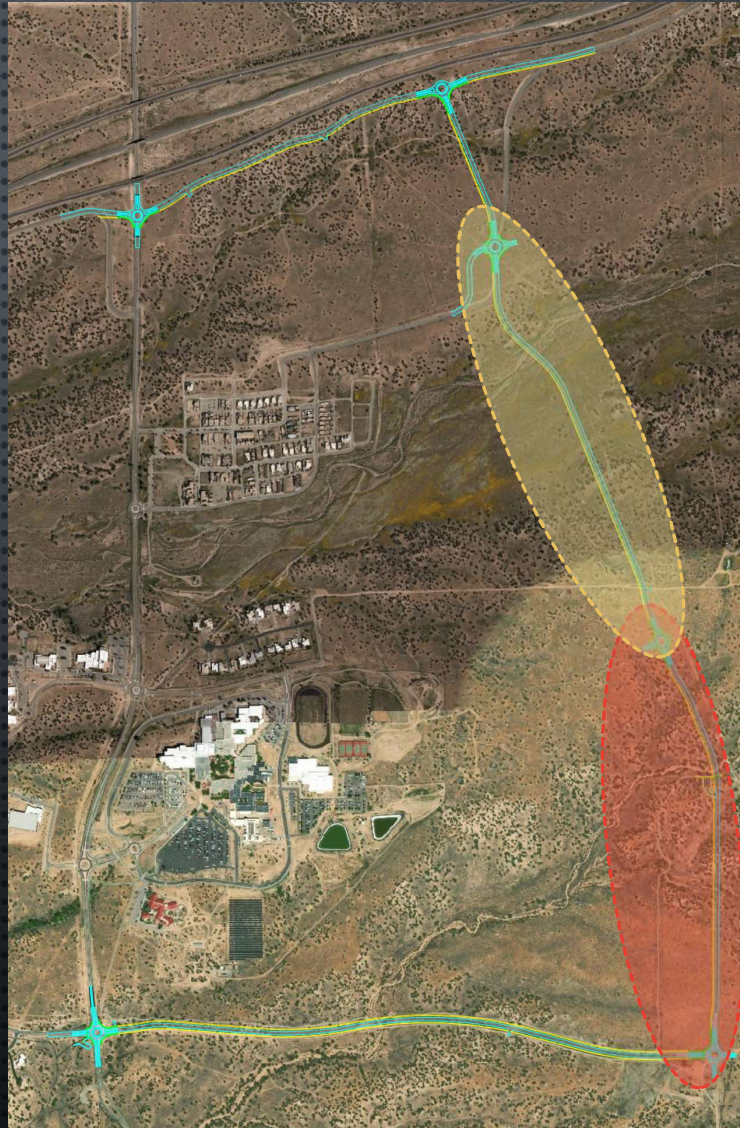
DRAINAGE & ENVIRONMENTAL

- ONE BOX CULVERT (ARROYO HONDO)
- THREE LARGE STRUCTURES (CANADA DEL RANCHO)
- HISTORIC RAILROAD GRADE



WATERLINE EXTENSION

- 12" WITH PROJECT (4,200 LF)
- 12" BY OTHERS (4,225 LF)



THANK YOU
NMITE
&
SANTA FE COUNTY

VISIT THE WEBSITE

WWW.SFCCONNECTORS.COM

MATTHEW NIGHBERT, P.E.

505-595-7755

MATTHEW.NIGHBERT@SOUDERMILLER.COM



**NE/SE Connector Roads Project
Ribbon Cutting Ceremony**

August 29, 2024 - 10:00 a.m.

Pledge of Allegiance & National Anthem

Margie Romero

Opening Remarks

Hank Hughes, Board of County Commissioners Chair

Anna Hansen, County Commissioner (D-2)

Gregory S. Shaffer, County Manager

Project Overview & Construction Details

Curt Temple, Projects Section Manager

Recognition of Project Partners

New Mexico Department of Transportation

Santa Fe Metropolitan Planning Organization

State Senators & Representatives

Souder, Miller & Associates (Design)

AUI, Inc. (Contractor)

Ribbon Cutting

Closing Remarks